

# AMBIMICRO

## Quick installation guide



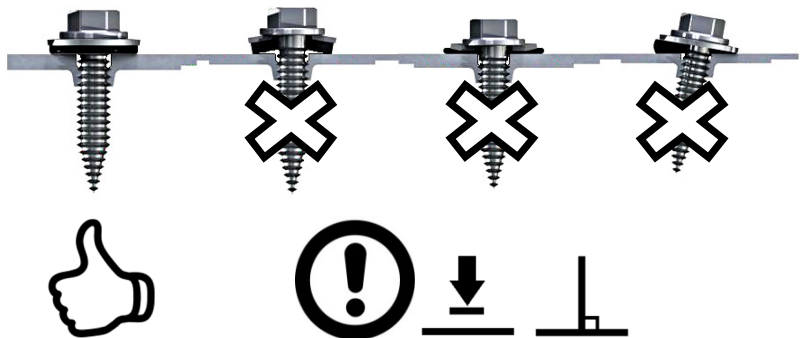
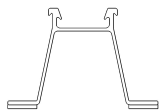
Please observe local loads and load reserves!



Please observe health and safety regulations!

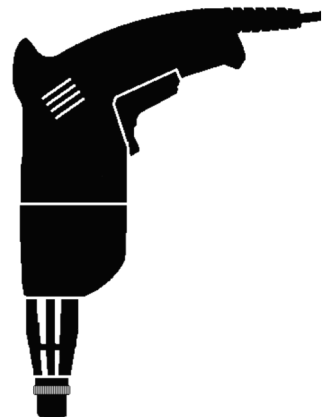
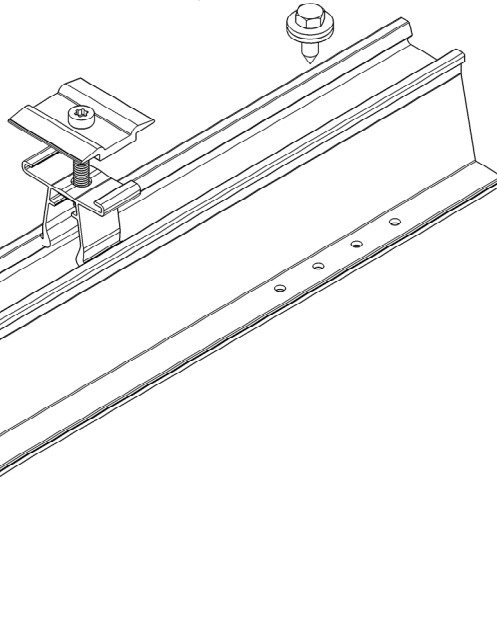
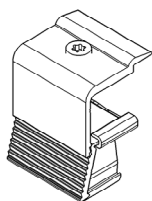
*Also read the general installation notes and notes about metal sheet roofs in our download section at [www.ambivolt.com](http://www.ambivolt.com). Please contact us in case of doubts or additional questions.*

## AMBIMICRO



*Screw in at a high speed until the drill bit is through the sheeting and then gently tighten at a low speed, using great care or a depth stop. Observe perpendicularity!*

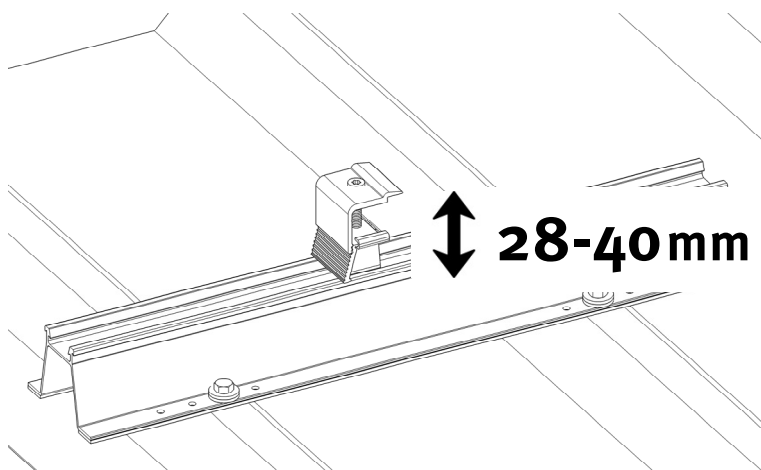
1



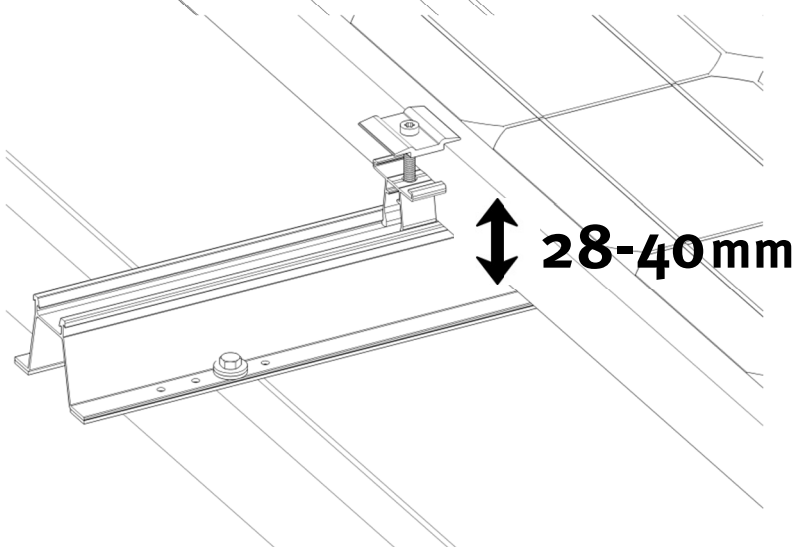
2



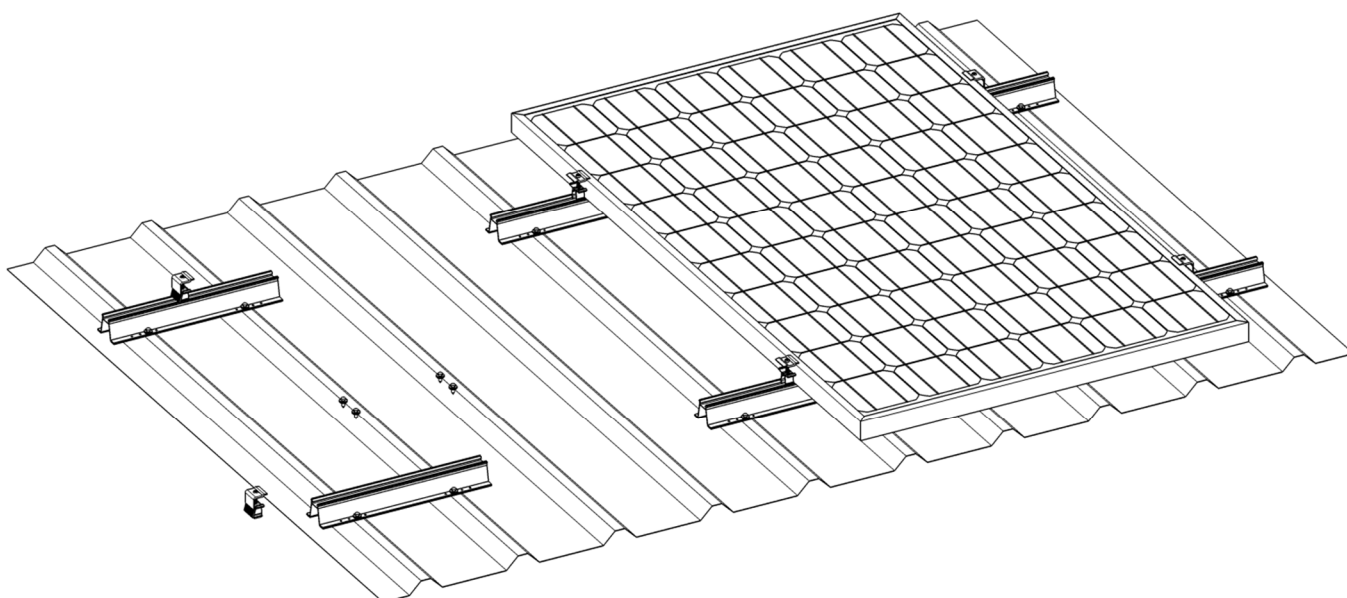
end clamp



middle clamp



3



*Follow the installation instructions provided by your module producer.*